

# T-Base Pro

T-Base Pro is a powerful tool to remotely control Raytech test instruments, to facilitate data exchange, analyze the recorded data, and to create useful test reports. It runs on every windows-based PC and its modern, graphical user interface makes it easy and a pleasure to operate. Any custom request or special feature can easily be added with a custom Add-On. Visit our website at [www.RaytechUSA.com](http://www.RaytechUSA.com) to download this free software.

## Features

- Remote handling of the test equipment and its data
  - Synchronization of data between PC and measuring instrument
  - View and compare measurement data in different time ranges
  - Store all measuring data in 1 database, sorted by transformer (test object)
  - Powerful search function to find measurements quickly
  - Easily integrate individual software plug-ins to expand T-Base Pro to your needs
- For use with the following Raytech Instruments:

- TR-Mark III
- TR-Mark III R
- TR-Mark III 250V
- TR-Mark III R 250V

- WR14
- WR14 R
- WR50-12
- WR50-12R

- WR50-13
- WR50-13R
- WR100-12R
- WR100-13R

- Import/export of transformer name plate
- Import/export of measuring results
- View test results in a table or a graph
- Generate, save and print test reports
- Sort by customer criteria
- All instruments connected by USB

## System Requirements

- Windows Vista / Windows 7 / Windows 8 / Windows 8.1 with the latest service pack
  - Pentium 4, 3.2 GHz or higher
  - Screen 1100 x 800 pixel or higher
  - 1 GB Ram Core2 requested
  - Microsoft .NET framework 4.5
- See Instruction Manual for more Parameters. Specifications subject to improvement at any time.

## Standard Accessories Included

- Free download of basic version of T-Base Pro
- Raytech USB driver

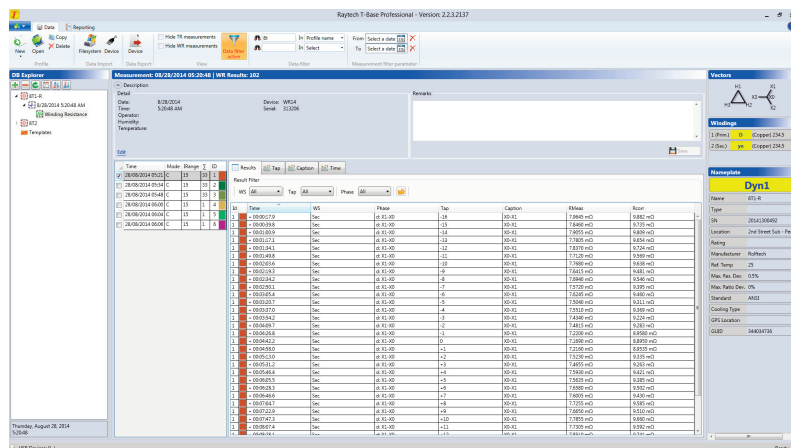
## Documentation

## Optional Items Available

- Database located on the server
- Plug-in for NON-Raytech measuring instruments

## Synchronization with server

License code required for each measuring instrument to be used remotely



**\*\*\*Test Report\*\*\***

**Transformer Nameplate**

Name: 8T1-R  
 SIN: 20141300492  
 Type: 20141300492  
 Location: 2nd Street Lab - Parks  
 Rating: 1.0MVA  
 Manufacturer: Roltech  
 Standard: ANSI  
 Cooling Type: ANCI  
 Remarks:

**Configuration: Dyn1**

---

**Measurement**

Date: 28.08.2014 05:20  
 Device Name: WR14  
 SIN Device: 313206  
 Remarks:

Initial Time: 28.08.2014 05:21:12 Mode: C

+Time	W/S	Tap	Phase	Caption	Rmeas	Rcorr	T 1 [°C]	T 2 [°C]	T 3 [°C]	T Ext [°C]	Test
00:00:17	Sec	-16	d: X1-X0	X0-X1	7.9645 mΩ	9.882 mΩ				23.0	15.1
00:00:39	Sec	-15	d: X1-X0	X0-X1	7.8460 mΩ	9.735 mΩ				23.0	15.1
00:01:00	Sec	-14	d: X1-X0	X0-X1	7.9055 mΩ	9.809 mΩ				23.0	15.1
00:01:17	Sec	-13	d: X1-X0	X0-X1	7.7805 mΩ	9.654 mΩ				23.0	15.1
00:01:34	Sec	-12	d: X1-X0	X0-X1	7.8374 mΩ	9.724 mΩ				23.0	15.1

Raytech is a world leader in the design and manufacture of precision electronic measuring instruments and systems. The unique design approach of the engineering team at Raytech has resulted in the development of highly regarded measuring instruments, which have set new standards in the electrical testing industry.

Our exceptional reputation for support and service is unmatched.

Raytech products are designed for many years of trouble-free use, which is why we can offer a **standard 5-year warranty** – guaranteeing the highest quality instrumentation available.



**Raytech USA**

118 S. 2nd Street  
Perkasie, PA 18944  
Tel: +267 404 2676

Email: [Welcome@RaytechUSA.com](mailto:Welcome@RaytechUSA.com)  
[www.RaytechUSA.com](http://www.RaytechUSA.com)



**Raytech GmbH**

Oberebenenstrasse 11  
5620 Bremgarten, Switzerland  
Tel: +41 56 648 6010

Email: [Welcome@Raytech.ch](mailto:Welcome@Raytech.ch)  
[www.Raytech.ch](http://www.Raytech.ch)

